

General

Pneumatic grippers from the 6300 series are typically used in complex systems such as assembly machines, robots, manipulators etc.

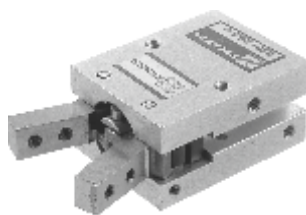
This series covers the wide range requirements of this sector, allowing a variety of applications.

The range includes grippers equipped with holding fingers operating from -10° to $+30^{\circ}$ degrees, with 180° degree opening, or a parallel guided gripper with great rigidity throughout the stroke.

The parallel grippers cater for larger openings (three different strokes for each diameter) with synchronised operation via a pinion-rack system with high strength thanks to a double piston mechanism.

For the typical application of supplying a piece upon to a machine tool, make provision for an automatic three-pronged movement carried along by a wedge mechanism, containing the elevated force dimensions.

The holding fingers can have a tolerance reference as a precise fixing device for the catching mechanism. Every type of "hand" offers different functional levels of performance at varying diameters and lengths, secondary to the application by the "fingers".



Ordering code

6301.Ø.

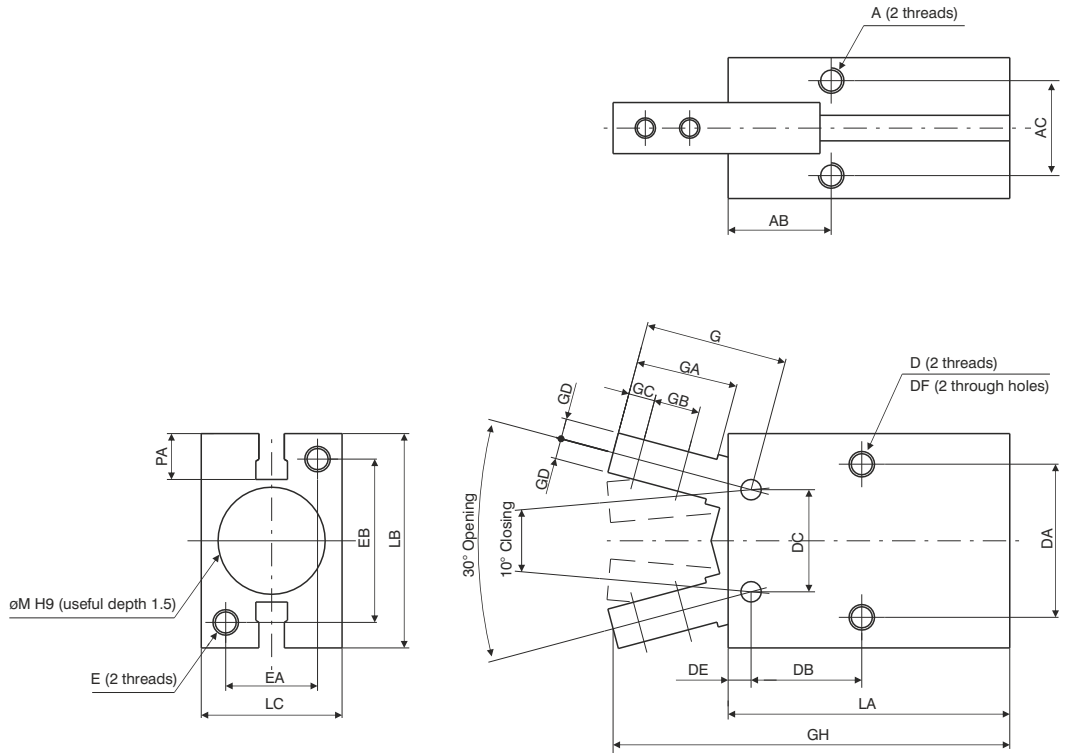
10	D = Double acting S = Single acting (N.O.)
16	
20	
25	

Construction characteristics

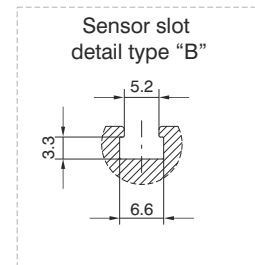
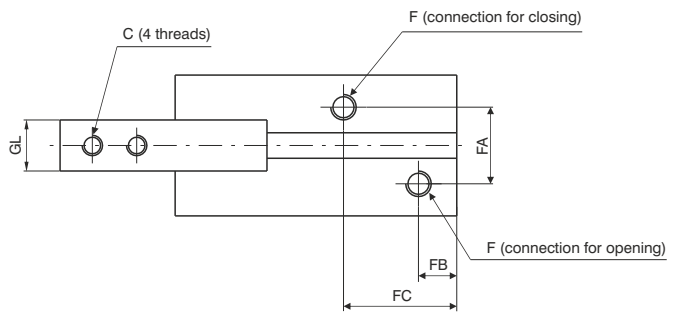
Body	anodised aluminium
Piston	AISI 303 stainless steel
Fingers	nitrate steel
End cover	anodised aluminium
Seals	oil resistant NBR rubber

Technical characteristics

Fluid	filtered and preferably lubricated air or not (If lubricated the lubrication must be continuous)		
Working pressure	1 - 6 bar (double acting) - 2.5 - 6 bar (single acting)		
Operating temperature	-5°C - +70°C		
Opening total stroke	-10° - 30°		
Holding force (Nm) at 5 bar	Bore - Double acting - Single acting		
	Ø10	0.1	0.07
	Ø16	0.4	0.30
	Ø20	0.7	0.55
	Ø25	1.35	1.08
Maximum operating frequency	from Ø10 to Ø25, 190 cycles/minute		



Bore	Ø10	Ø16	Ø20	Ø25
A	M3x0,5	M4x0,7	M5x0,8	M6
Useful depth	6	6,5	8	10
AB	11,6	14,6	20,2	23,9
AC	11,4	16	18,6	22
C	M2,5x0,45	M3x0,5	M4x0,7	M5x0,8
D	M3x0,5	M4x0,7	M5x0,8	M6
Useful depth	5	8	10	12
DA	16	24	30	36
DB	12,8	16,2	21,7	25,8
DC	10	16	20	25
DE	2,8	3,9	4,5	4,6
DF	2,6	3,4	4,3	5,1
E	M3x0,5	M4x0,7	M5x0,8	M6
Useful depth	6	8	10	12
EA	12	15	18	22
EB	18	22	32	40
F	M3x0,5	M5x0,8	M5x0,8	M5x0,8
FA	11	13	15	20
FB	7,2	7	7,5	7,7
FC	18,8	18,3	22,2	23,5
G	17,2	22,6	28	37,5
GA	12	16	20	27
GB	5,7	7	9	12
GC	3	4	5,2	8
GD	2	3,5	4	5
GH	52,4	62,5	78,7	92
GL ^{0/-0,1}	6,4	8	10	12
LA	38,6	44,6	55,2	60,4
LB	23	30,6	42	52
LC	16,4	23,6	27,6	33,6
M ^{H9}	11	17	21	26
PA	5,4	5,8	9	11,5
Weight (gr.)	40	90	180	315



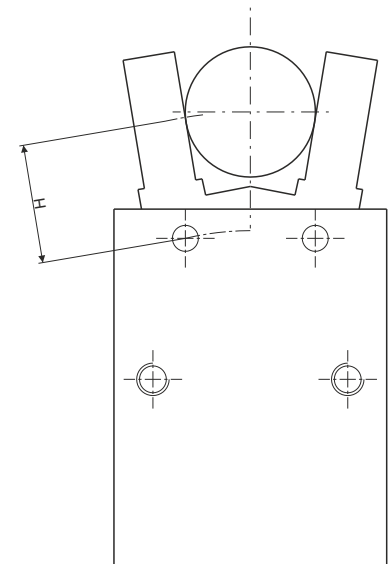
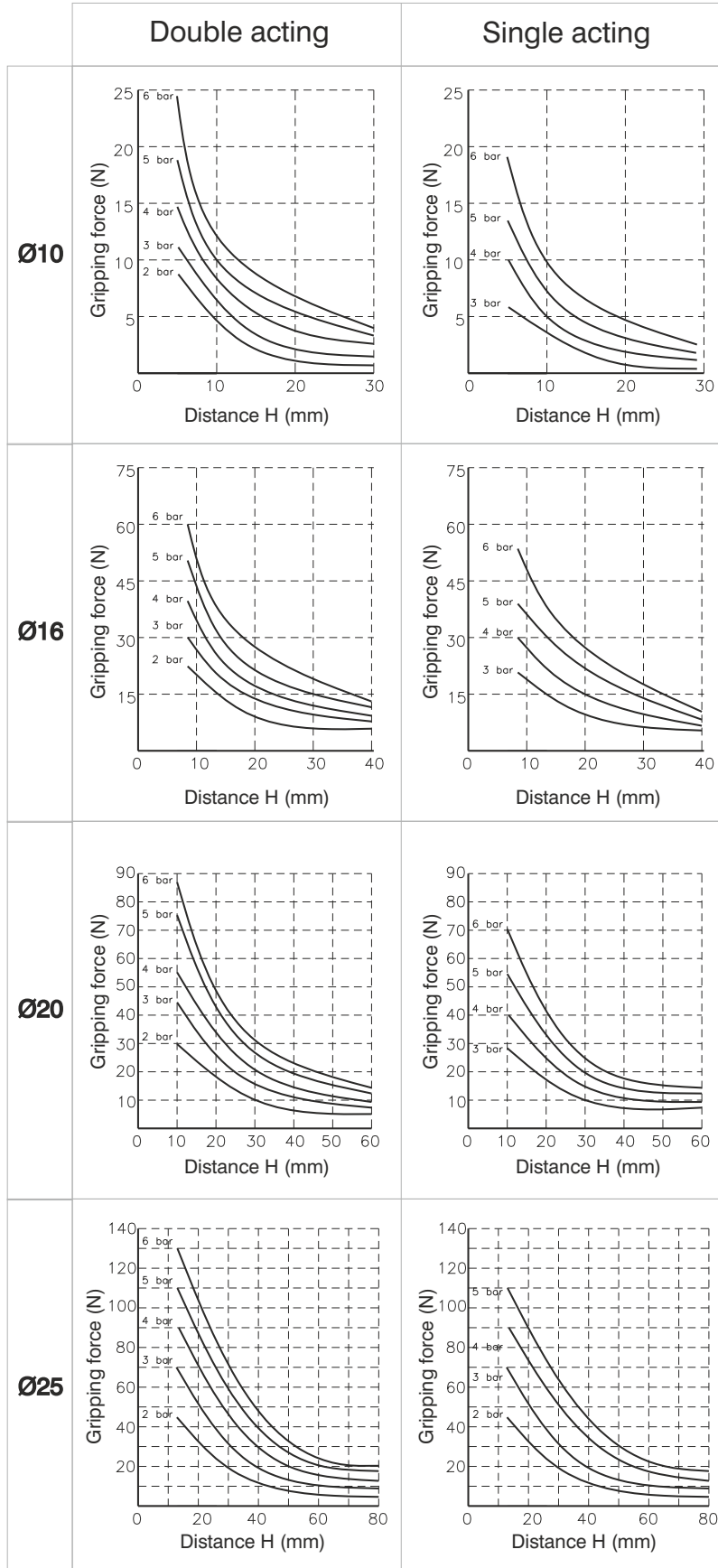
5

Gripping force 5 bar (Nm)

Bore	Ø10	Ø16	Ø20	Ø25
Double acting (Nm)	0,1	0,4	0,7	1,35
Single acting (Nm)	0,07	0,3	0,55	1,08

NOTE:

Bore selection should be made considering a holding force 10 to 20 times the component weight.
In case of acceleration/deceleration a further margin of safety should be considered.





Ordering code

6302.Ø.D

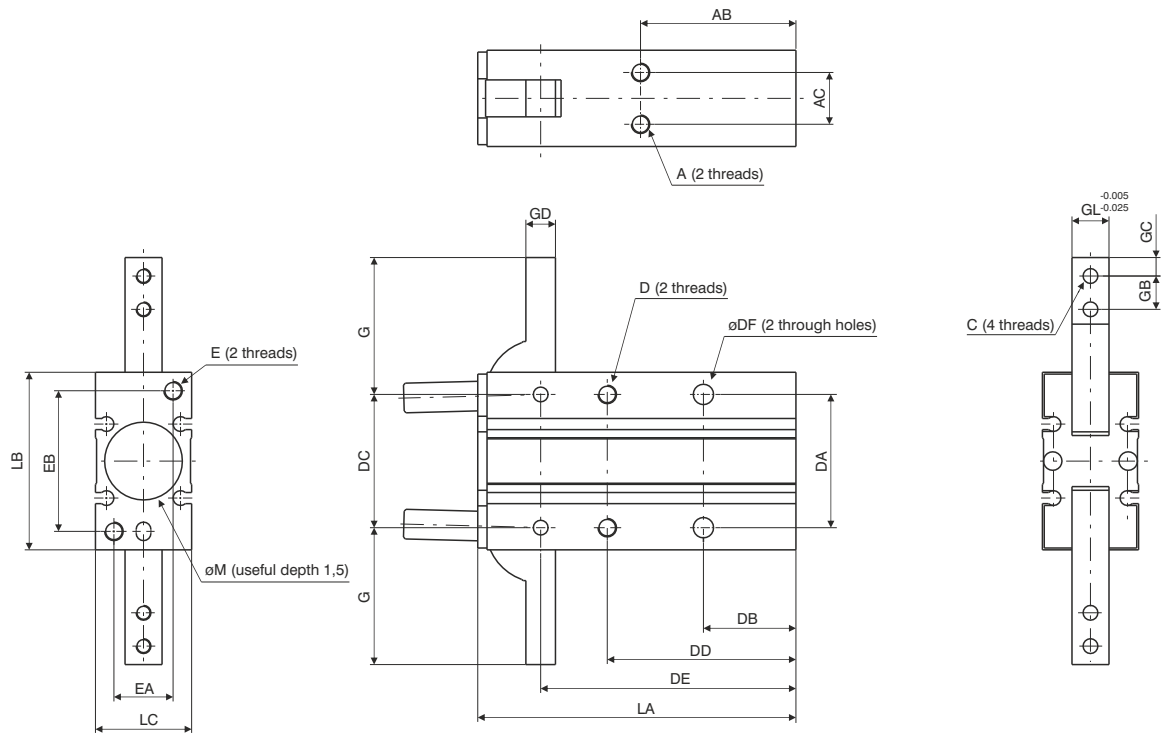
- 10
- 16
- 20
- 25

Construction characteristics

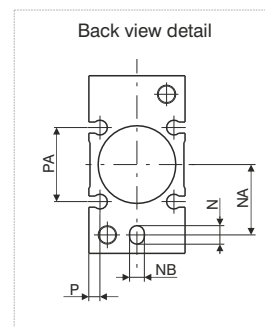
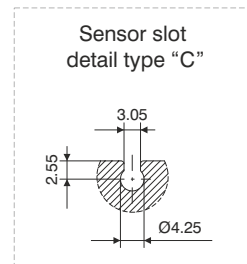
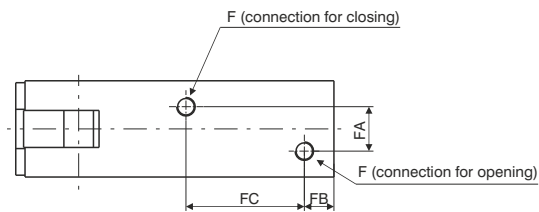
Body	anodised aluminium
Piston	aluminium
Fingers	steel
End cover	anodised aluminium

Technical characteristics

Function	double acting
Fluid	filtered and preferably lubricated air or not (If lubricated the lubrication must be continuous)
Working pressure	1 - 6 bar
Working temperature	-5C° - +70C°
Opening total stroke	-3° - 180°
Maximum operating frequency	from Ø10 to Ø25, 60 cycles/minute

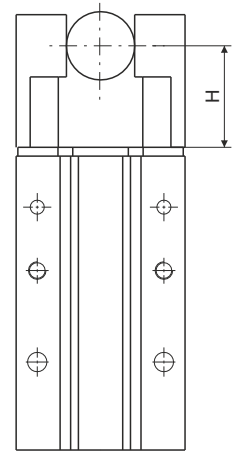
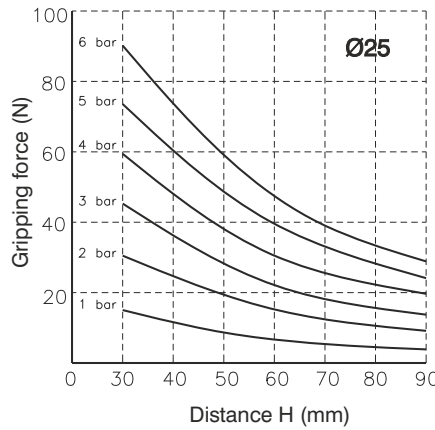
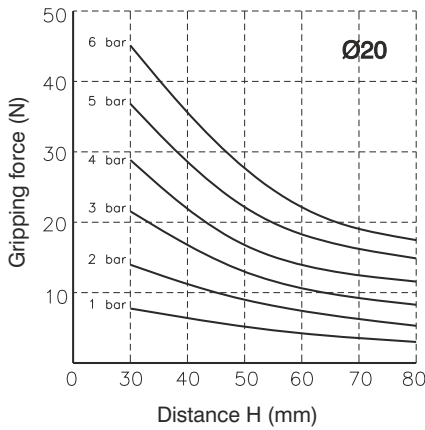
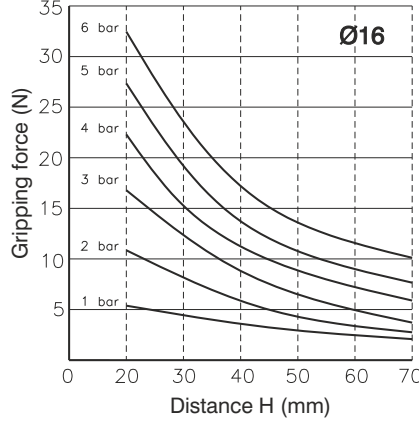
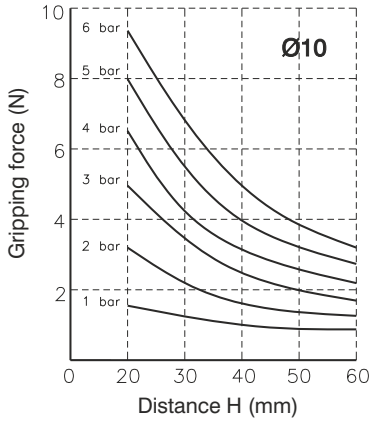


Bore	Ø10	Ø16	Ø20	Ø25
A	M3x0,5	M4x0,7	M5x0,8	M6x1
Useful depth	4	5	8	10
AB	30	33	42	50
AC	9	12	14	16
C	M3x0,5	M3x0,5	M4x0,7	M5x0,8
D	M3x0,5	M4x0,7	M5x0,8	M6x1
Useful depth	6	8	10	12
DA	24	30	36	42
DB	18	20	25	30
DC	22	28	36	45
DD	35	41	51	60
DE	47,5	55,5	69	86
DF	3,4	4,5	5,5	6,6
E	M3x0,5	M4x0,7	M5x0,8	M6x1
Useful depth	6	8	10	12
EA	9	12	16	18
EB	24	30	38	46
F	M5x0,8	M5x0,8	M5x0,8	M5x0,8
FA	3	8	2	14
FB	7	7	8	8
FC	23	25	32	42
G	23,5	28,5	37	45
GB	6	7	9	12
GC	3	4	5	6
GD	4	5	8	10
GL	6	8	10	12
LA	58	69	86	107
LB	30	38	48	58
LC	15	20	26	30
N	4	4	5	5
Useful depth	3	3	4	4
NA	9	15	19	23
ϕM^{H9}	11	17	21	26
ϕNB^{H9}	3	3	4	4
P	2	2,5	3	3
PA	13	18	20	24
Weight (gr.)	70	150	320	550

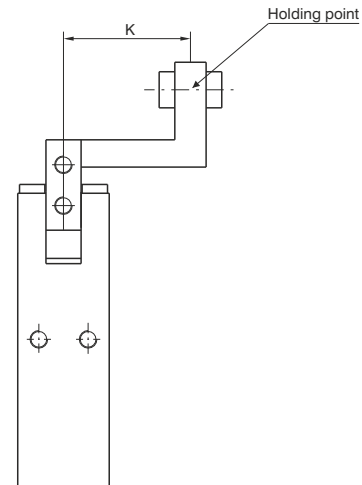
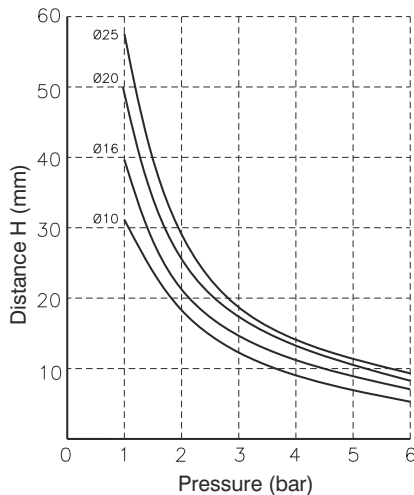


Gripping force 5 bar (Nm)

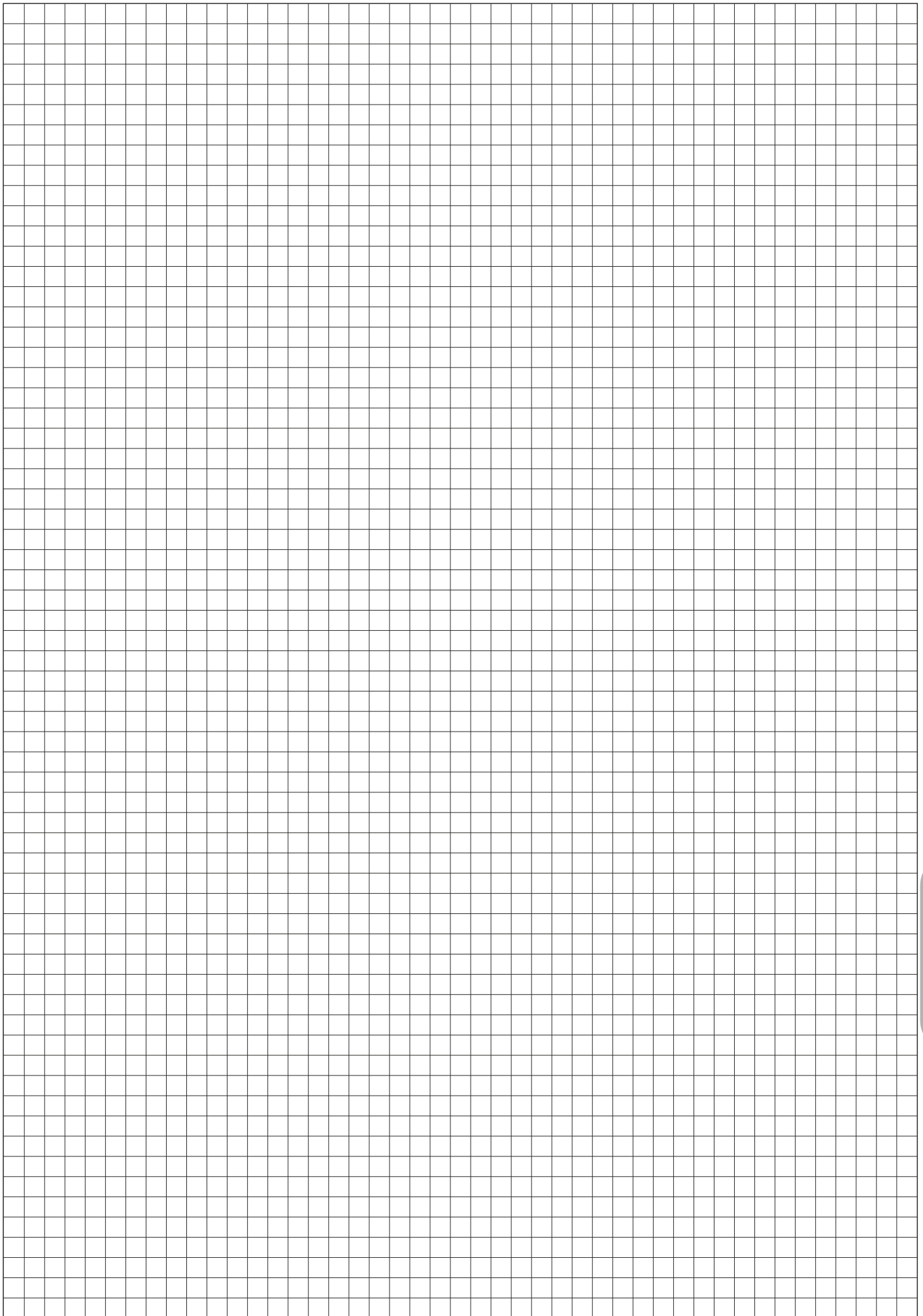
Bore	Ø10	Ø16	Ø20	Ø25
(Nm)	0,16	0,54	1,1	2,28

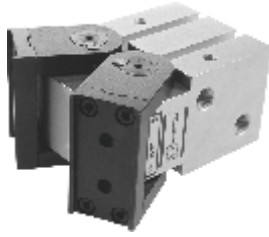


Confirmation of Holding point



Applications where the holding point is outside the recommended parameters shown on the above graph might affect the product life.





Ordering code

6303.Ø.D

- F = Fingers, end fixing
- L = Fingers, side fixing

20
25
32
40
50

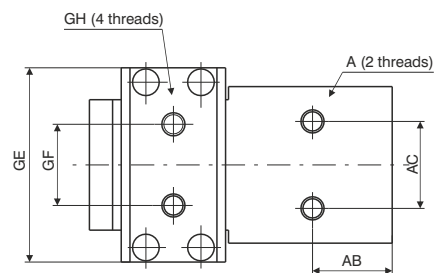
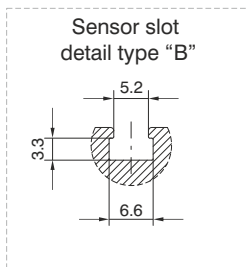
Construction characteristics

Body	anodised aluminium
Piston	aluminium
Fingers	steel
End cover	anodised aluminium

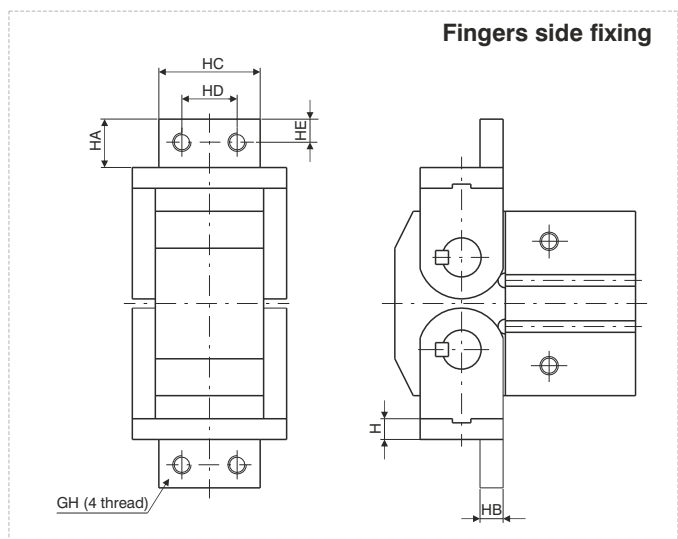
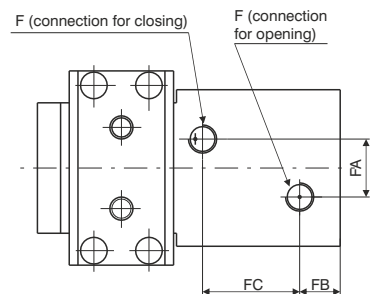
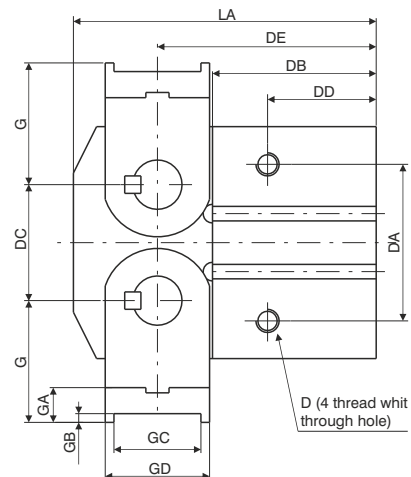
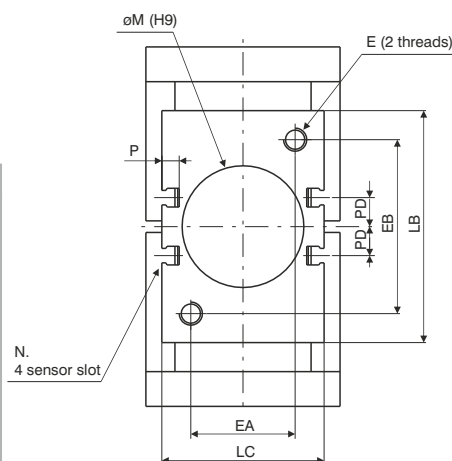
Technical characteristics

Function	double acting
Fluid	filtered and preferably lubricated air or not (If lubricated the lubrication must be continuous)
Working pressure	1.5 - 7 bar
Working temperature	-5°C - +70°C
Opening total stroke	-5° - 180°
Maximum operating frequency	from Ø20 to Ø25, 60 cycles/minute from Ø32 to Ø50, 30 cycles/minute

5



Bore		Ø20	Ø25	Ø32	Ø40	Ø50
A		M5	M6	M6	M8	M10
	Useful depth	7	10	10	15	20
AB		17	20	21	27,5	36
AC		20	24	24	30	40
D		M5	M6	M6	M8	M10
	Useful depth	10	12	12	16	20
DA		27	34	42	54	70
DB		35	40	47	56,5	69
DC		18	24	30	40	56
DD		23	27	29	37,5	48
DE		45	51	61,5	75,5	96
E		M5	M6	M6	M8	M10
	Useful depth	10	12	12	15	20
EA		26	30	30	36	40
EB		26	30	45	60	80
F		M5	M5	G1/8	G1/8	G1/4
FA		12	16	20	20	30
FB		9	10	13	14	16
FC		20	23	25	33,5	44
G		23	27	32	42	58
GA		7	8	9	12	17
GB		2	2	2	3	4
GC		12	17	23	30	44
GD		16	21	27	36	52
GE		41	45	51	67	85
GF		18	20	20	28	38
GH		M4	M5	M6	M8	M10
H		5	6	7	9	13
HA		10	12	14	21	24
HB		5	6	7	10	13
HC		28	30	34	44	58
HD		14	16	18	24	30
LA		60	69	83,5	104,5	136
LB		36	45	58	80	112
LC		36	40	45	56	66
ØM ^{H9}		21	26	34	42	52
	Useful depth	3	3	4	4	5
P		6	5,5	5,5	6	6
PD		4	4,5	11	10	13
Weight (gr.)		300	500	900	2100	5000



Gripping force

NOTE:

Bore selection should be made considering a holding force 10 to 20 times the component weight.
In case of acceleration/deceleration a further margin of safety should be considered.

Bore	Ø20	Ø25	Ø32	Ø40	Ø50
(Nm)	0,3	0,7	1,6	3,7	8,3

