



Piston pumps



Product notes

- > High volume flow and high vacuum level at low installation space
- > Can also be used as compressor
- > Low-vibration operation
- > Robust design
- > Long service life and maintenance-free operation due to permanently lubricated piston seals
- > Suitable for dry and moist air

Notes

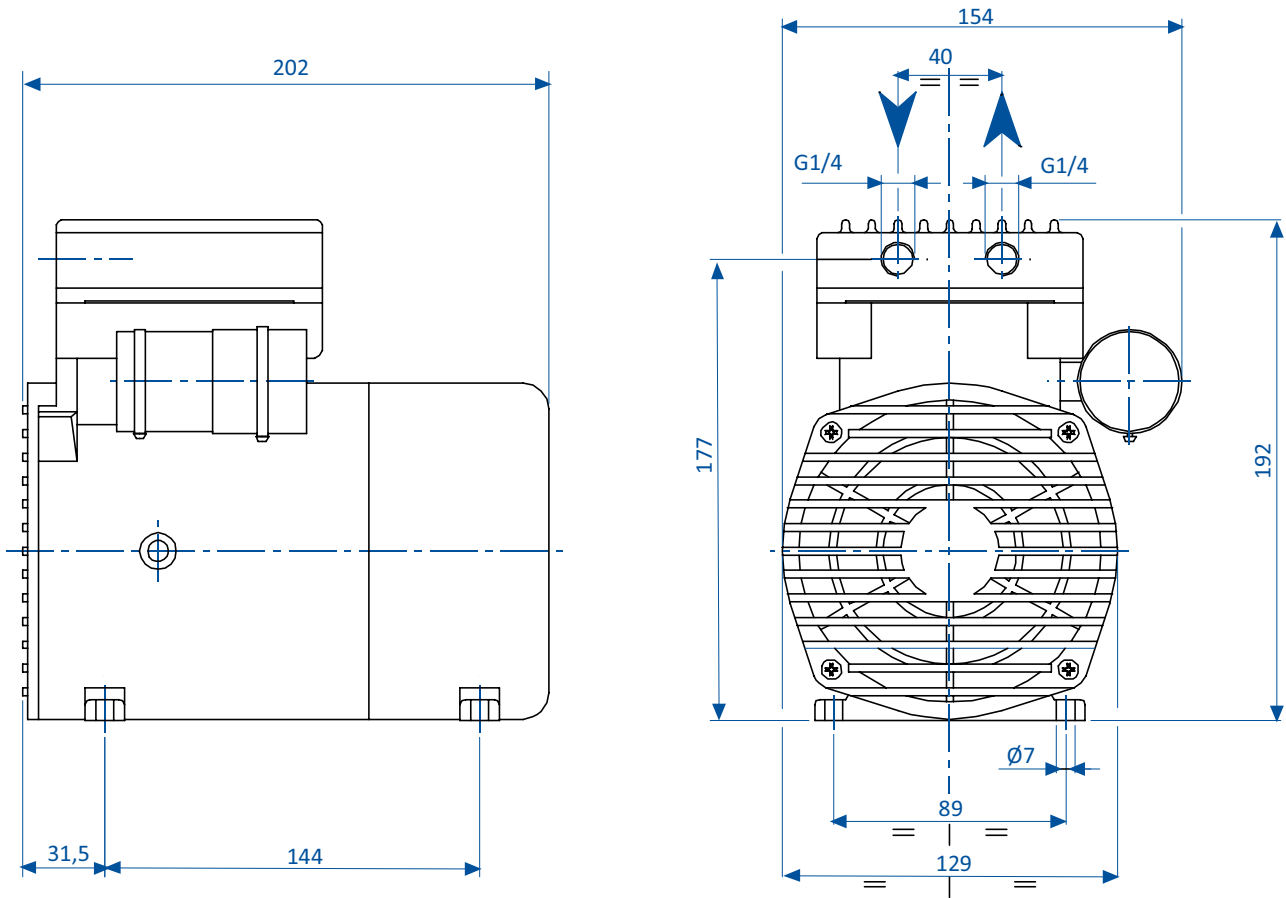
- > A 3/2-way valve must be installed at the inlet in case of pressure-vacuum alternating operation

Technical data

Item no.	KE.1.9A-1
Suction power at 50 Hz [m ³ /h]	1.9
Suction power at 60 Hz [m ³ /h]	2.2
Final vacuum [%]	89
Power supply [V]	220 - 240
Rated power at 50 Hz [kW]	0.2
Noise level at 50 Hz [dB(A)]	50
Noise level at 60 Hz [dB(A)]	52
Operating temperature [°C (°F)]	40 - 45 (104 - 113)
Weight [kg]	7.1
Suitable Pre-filters	FB 5 (p.626)



Dimensions



Diagrams

> Volume flow against pressure

