

### Ordering code

6301.Ø.

- 10
- 16
- 20
- 25

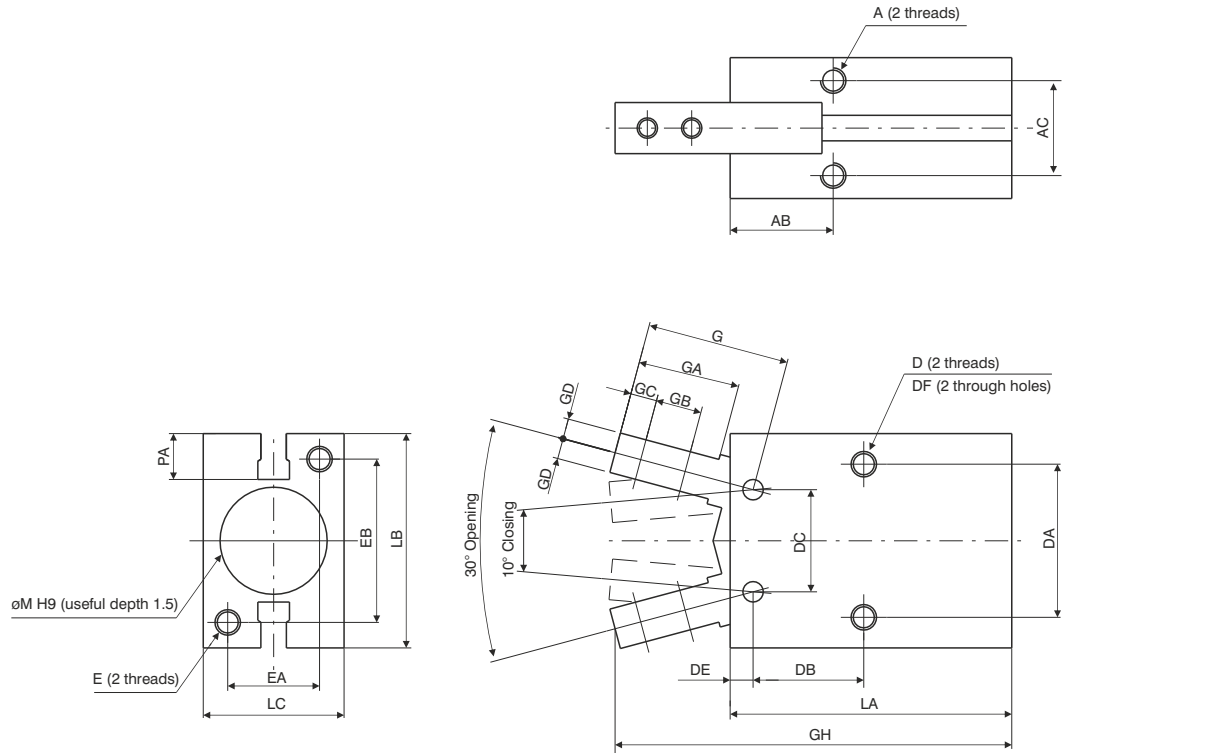
D = Double acting  
S = Single acting (N.O.)

### Construction characteristics

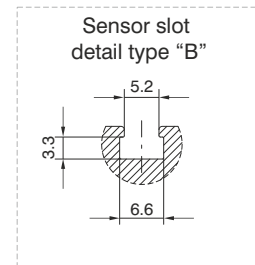
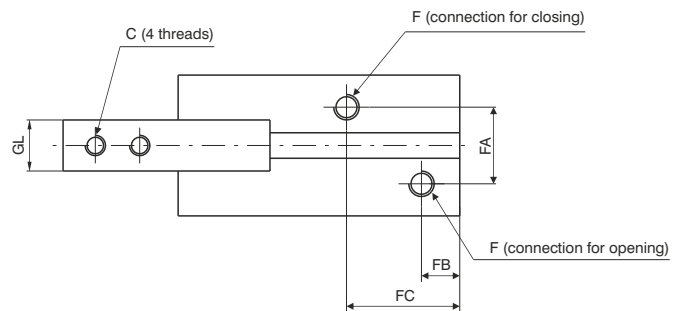
Body	anodised aluminium
Piston	AISI 303 stainless steel
Fingers	nitrate steel
End cover	anodised aluminium
Seals	oil resistant NBR rubber

### Technical characteristics

Fluid	filtered and preferably lubricated air or not (If lubricated the lubrication must be continuous)		
Working pressure	1 - 6 bar (double acting) - 2.5 - 6 bar (single acting)		
Operating temperature	-5°C - +70°C		
Opening total stroke	-10° - 30°		
Holding force (Nm) at 5 bar	Bore - Double acting - Single acting		
	Ø10	0.1	0.07
	Ø16	0.4	0.30
	Ø20	0.7	0.55
	Ø25	1.35	1.08
Maximum operating frequency	from Ø10 to Ø25, 190 cycles/minute		



Bore	Ø10	Ø16	Ø20	Ø25
A	M3x0,5	M4x0,7	M5x0,8	M6
Useful depth	6	6,5	8	10
AB	11,6	14,6	20,2	23,9
AC	11,4	16	18,6	22
C	M2,5x0,45	M3x0,5	M4x0,7	M5x0,8
D	M3x0,5	M4x0,7	M5x0,8	M6
Useful depth	5	8	10	12
DA	16	24	30	36
DB	12,8	16,2	21,7	25,8
DC	10	16	20	25
DE	2,8	3,9	4,5	4,6
DF	2,6	3,4	4,3	5,1
E	M3x0,5	M4x0,7	M5x0,8	M6
Useful depth	6	8	10	12
EA	12	15	18	22
EB	18	22	32	40
F	M3x0,5	M5x0,8	M5x0,8	M5x0,8
FA	11	13	15	20
FB	7,2	7	7,5	7,7
FC	18,8	18,3	22,2	23,5
G	17,2	22,6	28	37,5
GA	12	16	20	27
GB	5,7	7	9	12
GC	3	4	5,2	8
GD	2	3,5	4	5
GH	52,4	62,5	78,7	92
GL <sup>0/-0,1</sup>	6,4	8	10	12
LA	38,6	44,6	55,2	60,4
LB	23	30,6	42	52
LC	16,4	23,6	27,6	33,6
M <sup>H9</sup>	11	17	21	26
PA	5,4	5,8	9	11,5
Weight (gr.)	40	90	180	315



**Gripping force 5 bar (Nm)**

Bore	Ø10	Ø16	Ø20	Ø25
Double acting (Nm)	0,1	0,4	0,7	1,35
Single acting (Nm)	0,07	0,3	0,55	1,08

**NOTE:**

Bore selection should be made considering a holding force 10 to 20 times the component weight.  
In case of acceleration/deceleration a further margin of safety should be considered.

