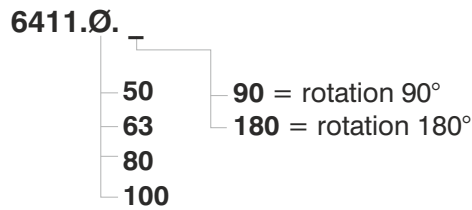


**Ordering code**



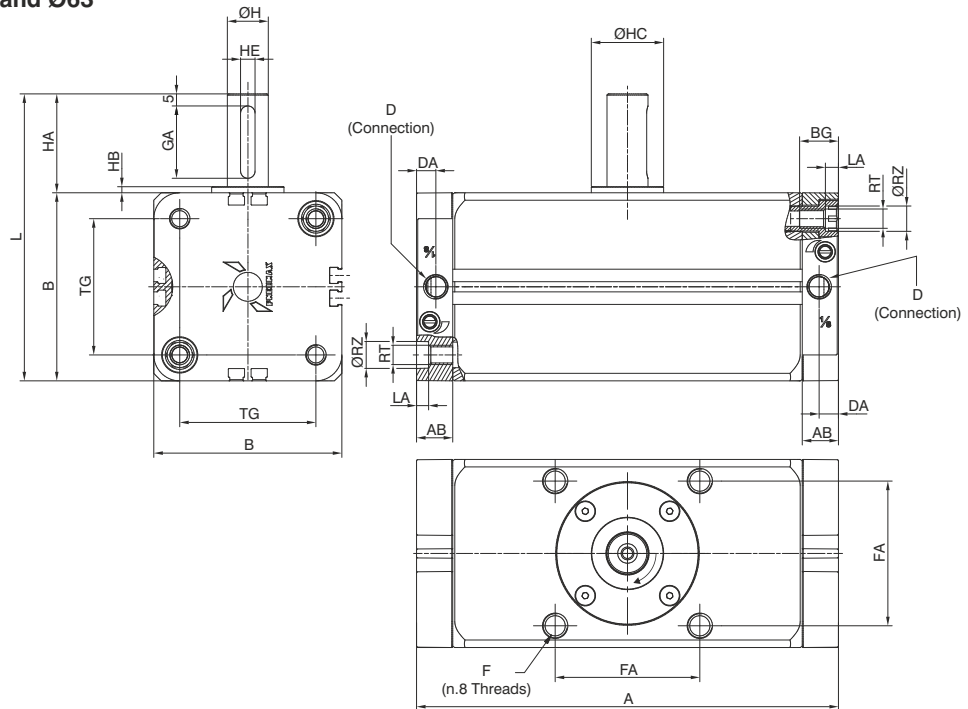
**Construction characteristics**

Body	anodised aluminium
Piston	aluminium
End plate	anodised aluminium
Piston seal	NBR rubber
Pinion	steel
Rack	steel

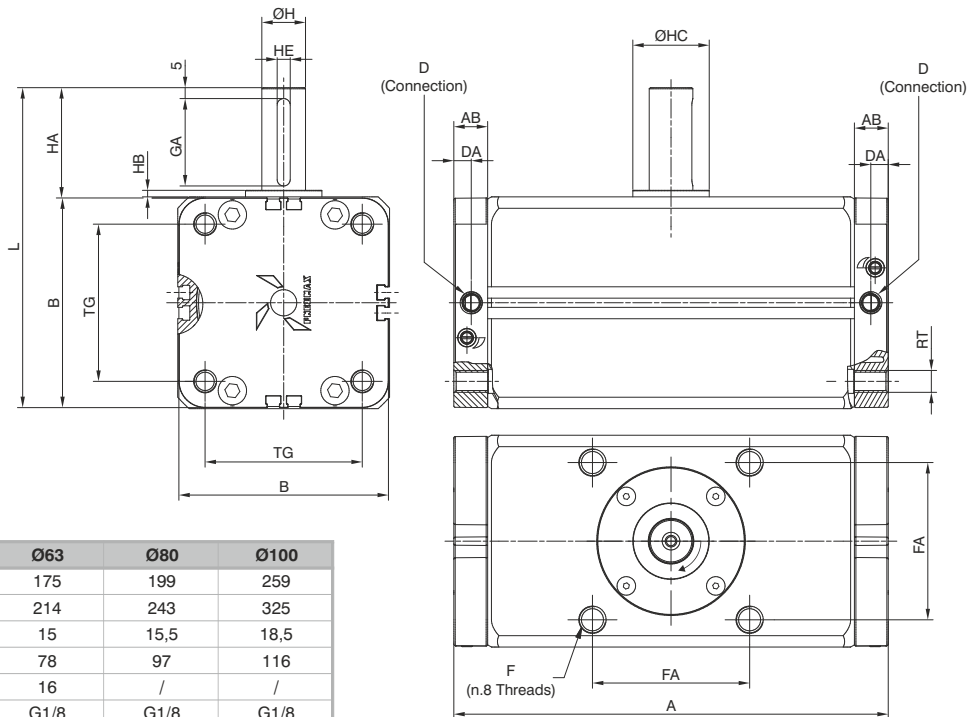
**Technical characteristics**

Fluid	filtered and preferably lubricated air or not (If lubricated the lubrication must be continuous)
Max. pressure	10 bar
Working temperature	-5°C - +70°C
Rotation tolerance	0° - +4°

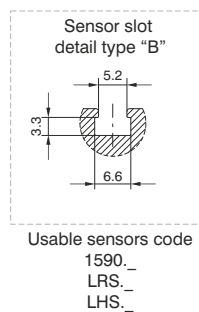
Overall dimensions Ø50 and Ø63



Overall dimensions Ø80 and Ø100

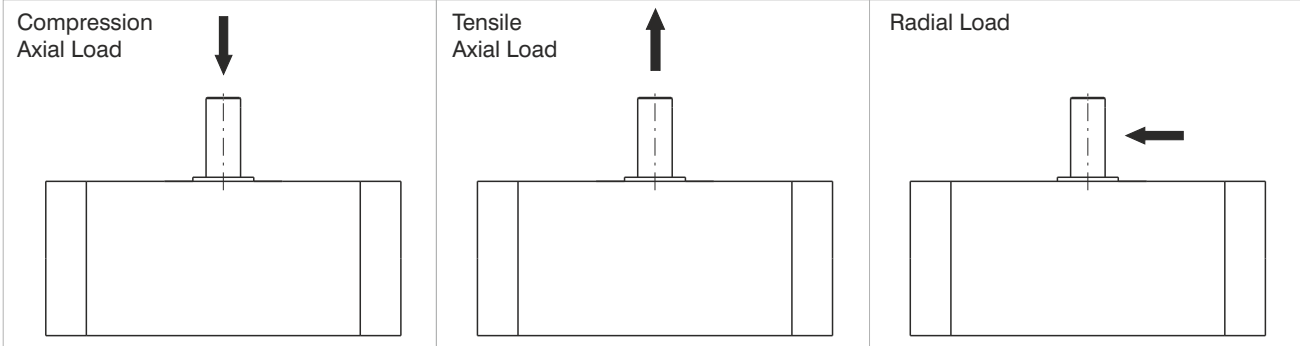


Bore		Ø50	Ø63	Ø80	Ø100
A	90°	156	175	199	259
	180°	189	214	243	325
AB		15	15	15,5	18,5
B		66	78	97	116
BG		16	16	/	/
D		G1/8	G1/8	G1/8	G1/8
DA		8	8	8	8
F		M8x1,25	M10x1,5	M12x1,75	M12x1,75
	Useful depth	12	15	15	18
FA		48	60	72	85
GA		25	30	40	45
H		15	17	20	25
HA		36	41	50	60
HB		2,5	2,5	3	4
HC		25	30	35	39,5
HE <sup>H9</sup>		5	6	6	8
L		102	119	147	176
LA		5	5	/	/
RT		M8	M8	M10	M10
RZ		10,5	10,5	/	/
TG		46,5	56,5	72	89
Weight (gr)	90°	1575	2451	4162	6989
	180°	1815	2823	4774	8329

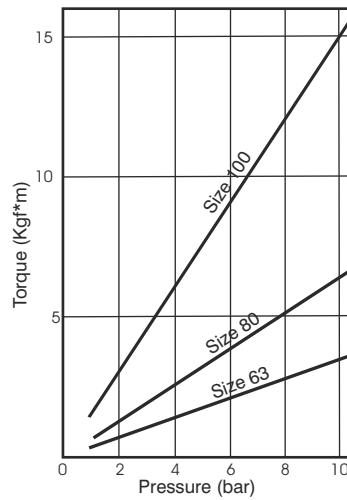
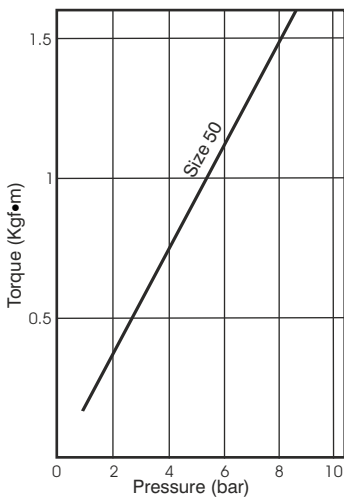


**Allowable Loads**

	Bore			
	Ø50	Ø63	Ø80	Ø100
Radial load (N)	200	300	400	600
Axial Load in compression (N)	500	600	900	1000
Tensile Axial Load (N)	200			



**Torque Diagrams**

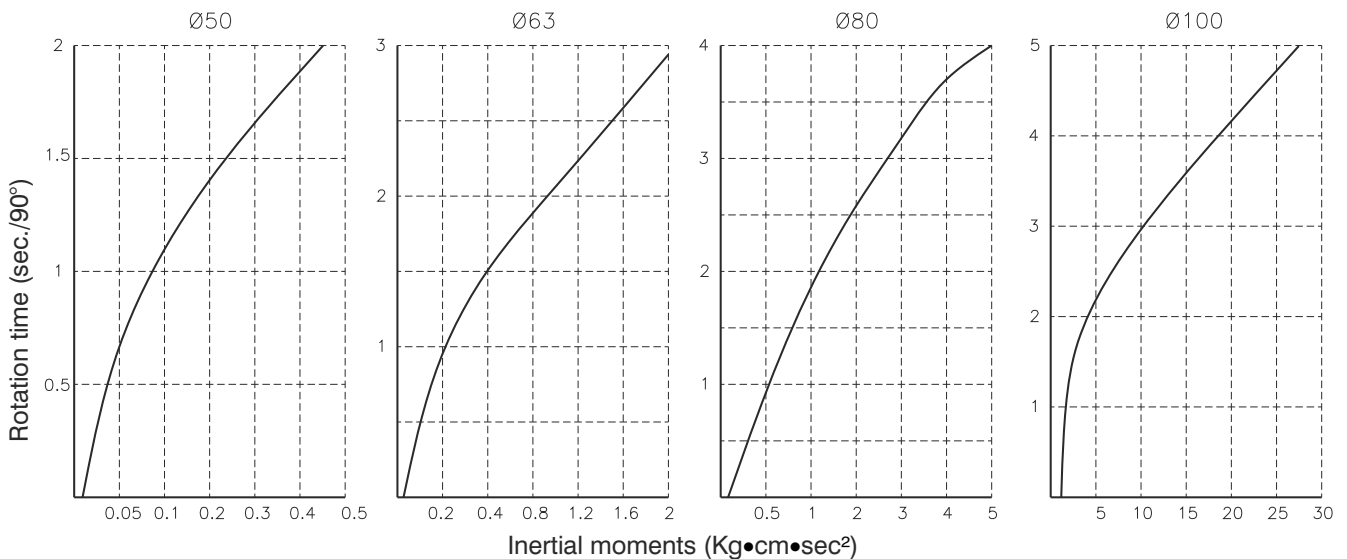


**Max Kinetic energy (Kg-cm)**

Kinetic energy (cushioning angle 35°)

Bore			
Ø50	Ø63	Ø80	Ø100
10	15	20	30

**Rotation time according to inertial moments**



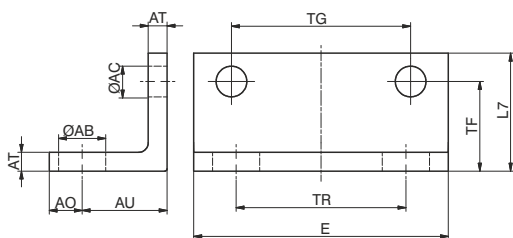
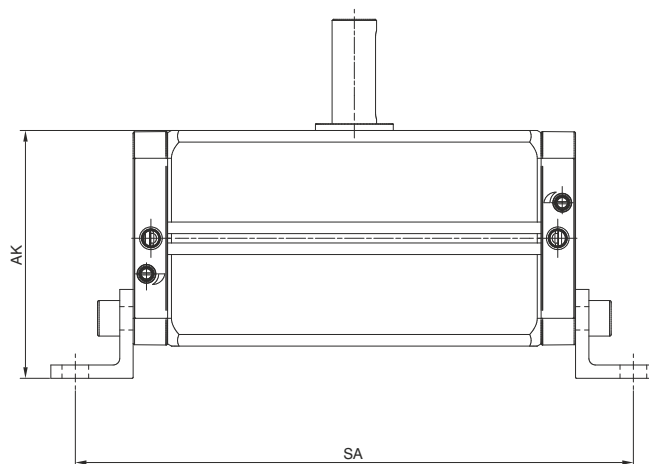
5

**Foot (MS1)**

Ordering code

**1540.Ø.05/1F**

The kit comprises:  
n°1 foot (plated zinc steel)  
n°2 screws (plated zinc steel)



Bore	Ø50	Ø63	Ø80	Ø100
<b>AK</b>	78	89	111,5	132
<b>SA</b>	90°	198	217	251
	180°	231	256	295