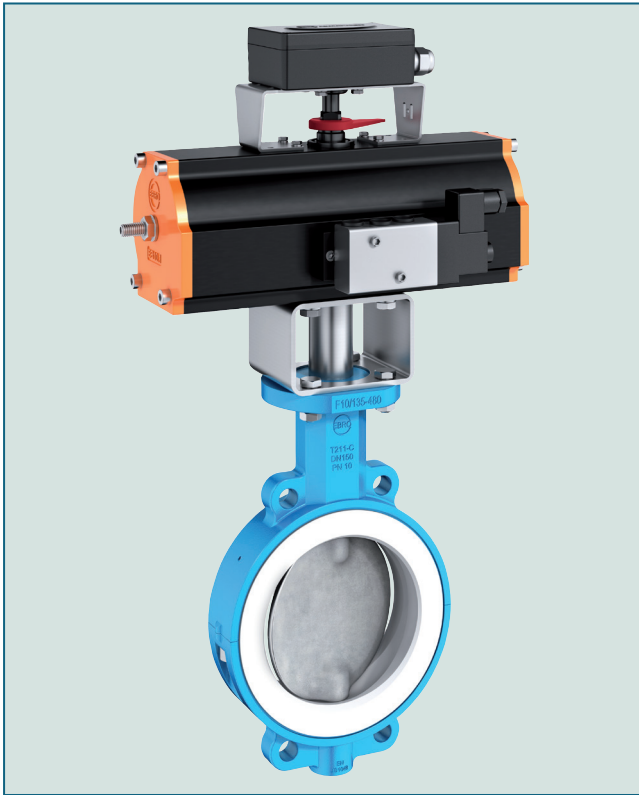


WAFER TYPE PROCESS VALVE T 211-C



PTFE-lined wafer type valve for chemically toxic and highly corrosive media.

TECHNICAL DATA

Nominal diameter:	DN (40)50 - DN 300
Face-to-face:	EN 558 Table 20
Flange accommodation:	EN 1092 PN 10/16 ASME Class 150
Flange Surface Design:	EN 1092 Form A/B ASME RF, FF
Top flange:	EN ISO 5211
Marking:	EN 19 PAS 1085
Tightness check:	EN 12266 (Leakage rate A)
Temperature range:	-40°C to +200°C (depending on working pressure)
Operating pressure:	max. 10 bar (16 bar special version)
Vacuum:	up to 1 mbar absolute, (with silicon elastomer inserts) from -10°C to +160°C

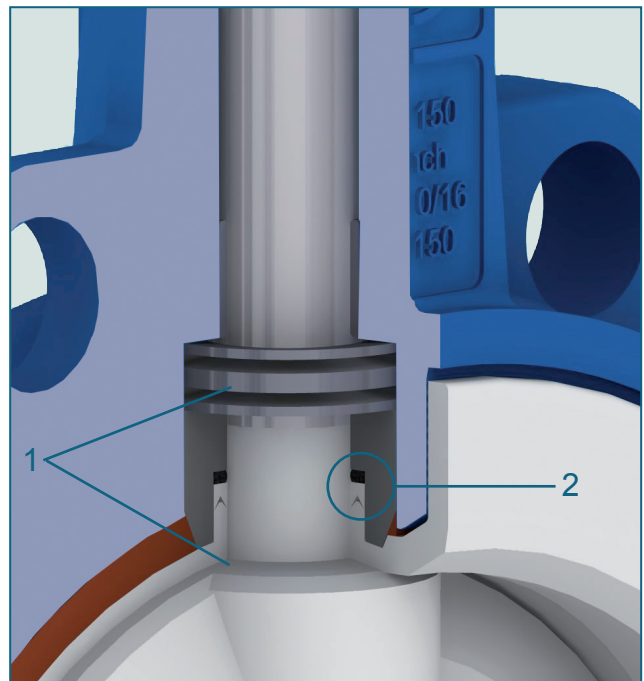
Valve Design
acc. to PAS 1085

FEATURES

- Environmental protection via EBRO-Safety seal
- TA-Luft/ VDI 2440, RWTÜV certified
- Isolation height according to plant prescription
- Maintenance-free
- Can be disassembled, material-specific recycling possible
- Material conform to FDA to EG 1935/2004

DESIGN FEATURES

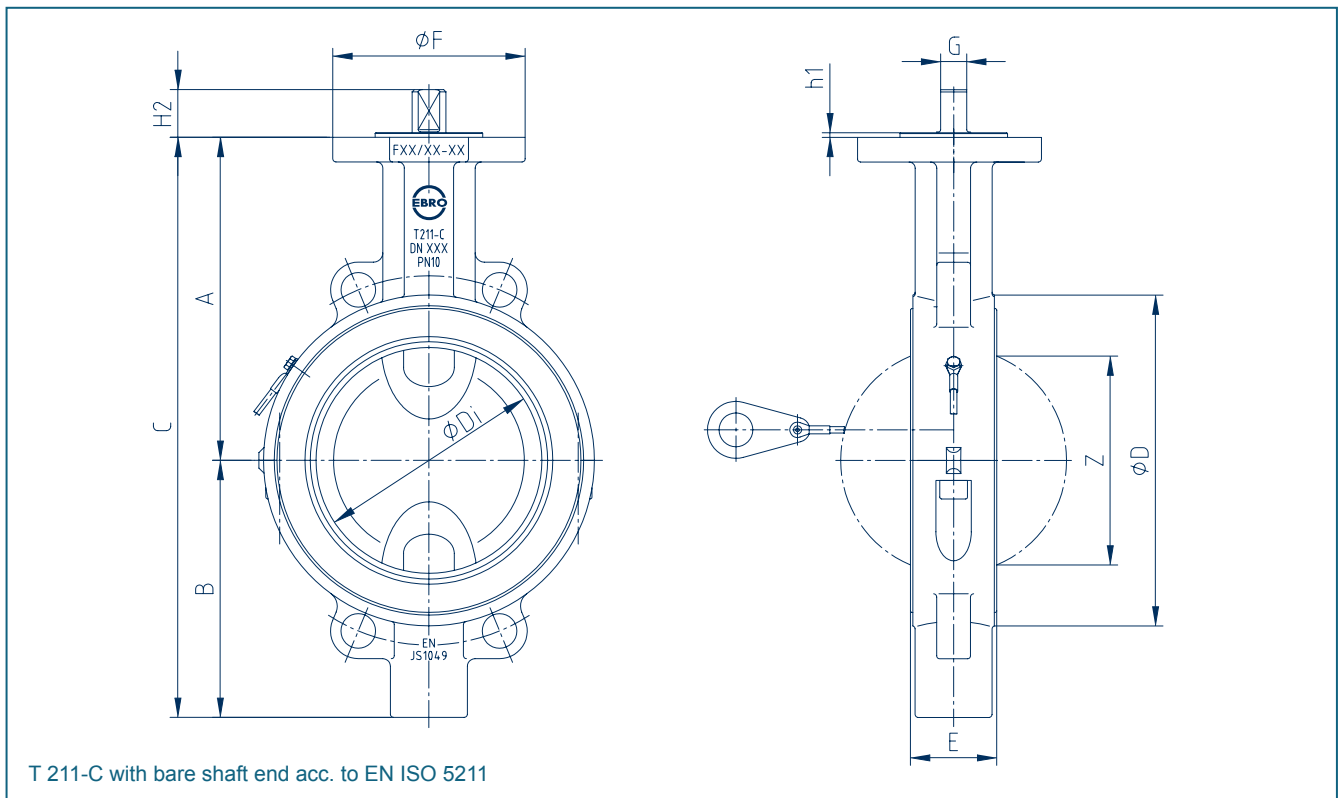
- Optimized low torques
- FEM dimensioned components
- Double flat shaft acc. to EN standards
- Shaft/ disc: duplex (one-piece lost-wax casting)
- Triple shaft bearing



Safety seal at both shaft ends:

1. Primary sealing by means of a Belleville spring washer, transmitting prestress on the spherical segment area.
2. Secondary sealing of the shaft by means of PTFE-Chevron and o-ring.

WAFER TYPE PROCESS VALVE T 211-C

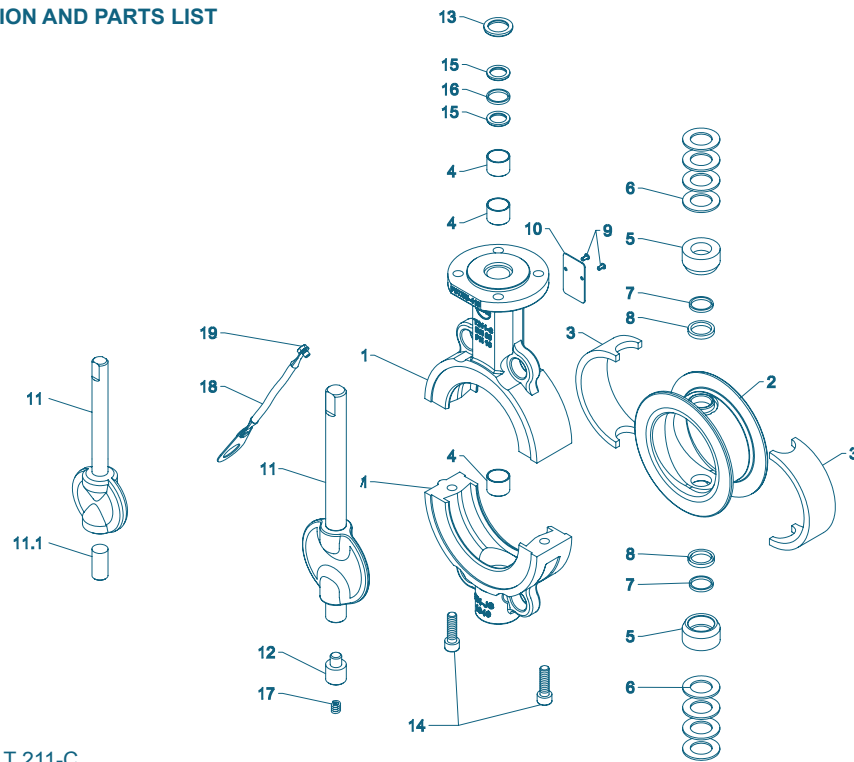


DN [mm]	Size [in]	Dimensions [mm]											Weight [kg]	
		A	B	C	ØD	ØDi	E	Flange	ØF	G	h1	H2		Z
40/50	1½ 2	126	95	221	112	49	43	F07	90	11	3	22	25	3,5
65	2½	150	103	253	120	61	46	F07	90	11	3	22	41	4
80	3	157	124	281	138	80	46	F07	90	14	3	26	66	6
100	4	180	135	315	160	100	52	F07	90	14	3	26	85	8
150	6	210	167	377	215	151	56	F10	125	17	3	31	141	11
200	8	240	190	430	269	196	60	F12	150	17	3	31	187	18
250	10	275	232	507	324	248	68	F12	150	22	3	40,5	239	32
300	12	298	260	558	374	293	78	F14	175	22	4	41,5	283	46

Subject to change without notice

WAFER TYPE PROCESS VALVE T 211-C

MATERIAL SPECIFICATION AND PARTS LIST



Wafer type process valve T 211-C

Pos.	Description	Material	Material-No.	ASTM	Pos.	Description	Material	Material-No.	ASTM
1	Body				11**	Shaft/Disc	one-piece		
	Nodular Cast Iron	EN-JS 1049	EN 1563	A395		St. Steel /St. Steel	GX2CrNiMoN26-7-4	1.4469	EN 10213
2**	Seat					St. Steel /St. Steel PFA	GX2CrNiMoN26-7-4	1.4469	
	PTFE	Polytetrafluorethylene	PTFE	PTFE *			Perfluoroalkoxy	PFA	PFA
3**	Elastomer insert				11.1	Lower shaft (DN 40/50 only)			
	Silicon	Silicon - rubber	MVQ	VMQ		Stainless Steel	X2CrNiMoN22-5-3	1.4462	Duplex
4	DU-bearing				12	Lower shaft stup (DN 65 - DN 200 only)			
	PTFE coated					Stainless Steel	X39CrMo 17-1	1.4122	
5**	Trust collar				13	Wiper ring			
	Stainless Steel	X5CrNiMo17-12-2	1.4401	316		PTFE	Polytetrafluorethylene	PTFE	PTFE
6	Belleville spring washer				14	Screw			
	Stainless Steel	X12CrNi177	1.4568	631		Stainless Steel	A4-70	1.4401	A193-B8
7**	O-Ring				15**	Thrust ring			
	FPM	Fluorocarbon caoutchouc	FPM	FKM		PTFE	Polytetrafluorethylene	PTFE	PTFE
8**	Chevron seal				16**	O-Ring			
	PTFE	Polytetrafluorethylene	PTFE	PTFE		FPM	Fluorocarbon caoutchouc		FKM
9	Groove pin				17	Spiral spring			
	Stainless Steel	A2				Spring steel	X10CrNi 18-8	1.4310	301
10	Type plate				18	Buttstrap			
	Stainless Steel								
					19	Screw			
						Stainless Steel	A2-70		A193-B8

* optional: electrically conductive

** recommended spare parts

Subject to change without notice

WAFER TYPE PROCESS VALVE T 211-C

TORQUE

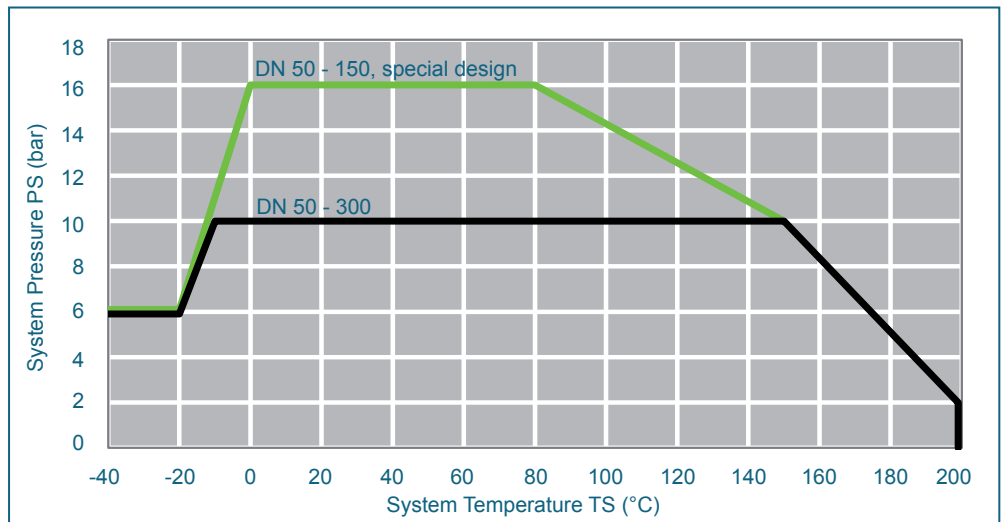
- The torque values specified (Md) are based on dry media and are measured with air at a temperature of 20 °C
- The values specified are based on the initial breakaway torque (disc disengages from seat, torque then drops)
- Dynamic torque specification available upon request

Regarding the dimensioning of actuators, please contact our engineers.

PRESSURE/TEMPERATURE DIAGRAM

DN (mm)	40/50	65	80	100	150	200	250	300
Size (in)	1½ 2	2½	3	4	6	8	10	12
MD (Nm)	35	35	55	70	135	170	320	380
MAST (Nm)*	105	105	250	250	480	480	1020	1020

*Maximum torques (Nm)



Pressure-Temperature-Diagram for valves with silicone elastomer inserts

Service limitation with Fluor carbon inserts (FPM) from -10°C up to +120°C

Service limitation with EPDM elastomer inserts from -10°C up to +180°C

Vacuum service to 1mbar absolute, from -10°C up to +160°C. Valve installation between flanges

K_V-VALUES

- The K_V-value [m³ per hour] is the flow of water at a temperature of 5°C to 30°C (41°F to 86°F) at Δp of 1 bar

- The K_V-values specified are based on tests carried out by the Delfter Hydraulics Laboratories, the Netherlands

- Permissible velocity of flow
V_{max} 4,5 m/s for liquids,
V_{max} 70 m/s for gases

- The throttle function is linear at an angle 30° to 70°

- Avoid cavitation

For further values, please contact our engineers.

DN [mm]	Size [in]	Opening angle α°							
		20°	30°	40°	50°	60°	70°	80°	90°
1) K_V-values metal disc									
40/50	1½ 2	1	8	18	32	53	81	107	111
65	2½	1	8	24	50	70	100	140	210
80	3	1,2	15	44	95	124	180	300	520
100	4	8	25	60	170	210	280	540	980
150	6	35	95	190	350	460	850	1300	2300
200	8	69	253	457	729	1110	1783	2570	3020
250	10	120	380	690	1200	1680	2650	4500	6600
300	12	165	504	937	1512	2275	3795	6810	12800
2) K_V-values PFA-disc									
40/50	1½ 2	0,8	6	13	24	40	54	63	66
65	2½	1,5	12	28	52	70	96	110	150
80	3	2,5	20	48	88	118	160	200	250
100	4	12	32	68	170	2210	260	500	780
150	6	45	105	205	370	490	720	1250	2200
200	8	88	297	520	695	1130	1700	2500	2700
250	10	148	430	695	1250	1800	2520	4350	5400
300	12	263	557	960	1560	2450	4300	6700	9400

Subject to change without notice