



Rotary vane vacuum pumps – oil-free

Handling in dry areas



Product notes

- > High reliability and low maintenance costs due to simple design
- > Universal application: Continuous operation at different vacuum levels
- > Cooling with powerful fan at the rear of the motor
- > Compact design and low weight
- > Protection class IP55
- > Available in single-phase and three-phase designs (Index -1 or -3)
- > Included in scope of delivery:
 - Safety filter on suction side
 - Silencer on pressure side
- > Electric cables not included

Technical data

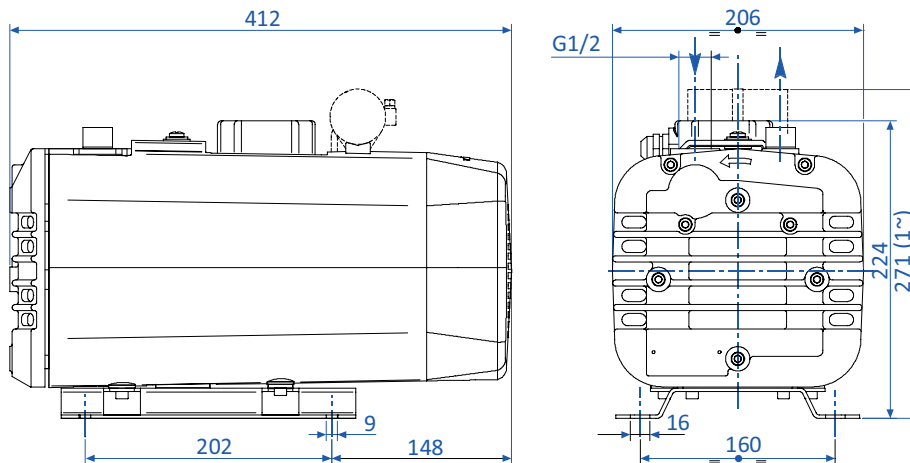
Item no.	DT.16B-1	DT.16B-3	DT.25B-1	DT.25B-3	DT.40B-1	DT.40B-3
Suction power at 50 Hz [m ³ /h]	16	16	25	25	40	40
Suction power at 60 Hz [m ³ /h]	19	19	29	29	48	48
Final pressure abs. [mbar (psi)]	120 (1.7)	120 (1.7)	120 (1.7)	120 (1.7)	120 (1.7)	120 (1.7)
Power supply at 50 (60) Hz [V]	220 - 240	Delta: 175-260 (200-300) Star: 300-450 (346-520)	220 - 240	Delta: 175-260 (200-300) Star: 300-450 (346-520)	220 - 240	Delta: 175-260 (200-300) Star: 300-450 (346-520)
Current consumption at 50 (60) Hz [A]	4.3 (4.5)	Delta: 2.6 (2.9) Star: 1.5 (1.7)	5.2 (6)	Delta: 3.6 (3.9) Star: 2.1 (2.3)	8.5 (9.3)	Delta: 7 (7.1) Star: 4 (4.1)
Rated power at 50 Hz [kW]	0.66	0.55	0.75	0.75	1.5	1.5
Rated power at 60 Hz [kW]	0.72	0.66	0.9	0.9	1.8	1.8
Noise level at 50 Hz [dB(A)]	63	63	65	65	68	68
Noise level at 60 Hz [dB(A)]	65	65	67	67	70	70
Operating temperature at 50 Hz [°C (°F)]	55 - 60 (131 - 140)	55 - 60 (131 - 140)	65 - 70 (149 - 158)	65 - 70 (149 - 158)	75 - 80 (167 - 176)	75 - 80 (167 - 176)
Operating temperature at 60 Hz [°C (°F)]	60 - 65 (140 - 149)	60 - 65 (140 - 149)	70 - 75 (158 - 167)	70 - 75 (158 - 167)	80 - 85 (176 - 185)	80 - 85 (176 - 185)
Weight [kg]	29.5	27.5	29	27	40	37.5
Suitable accessories	Spare part kit: KIT-DT.16B* Vacuum regulator: 73.002 Pre-filter: FC 20F		Spare part kit: KIT-DT.25B* Vacuum regulator: 73.003 Pre-filter: FC 25F		Spare part kit: KIT-DT.40B* Vacuum regulator: 73.003 Pre-filter: FC 30F	



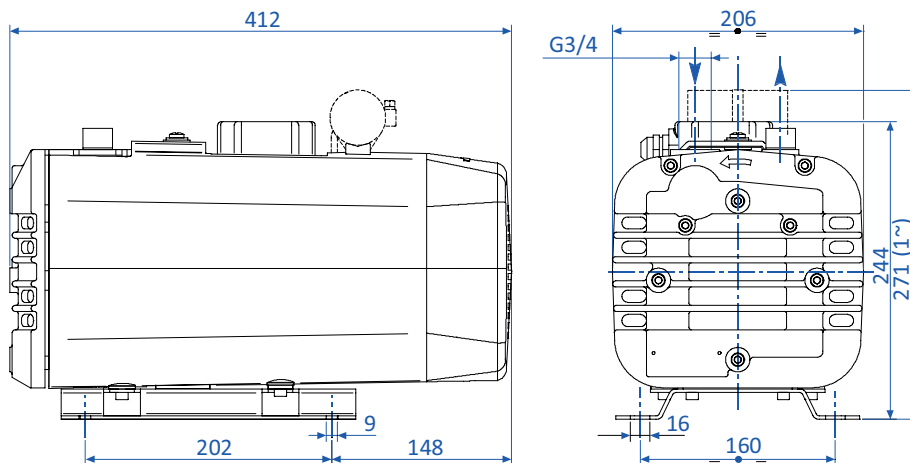
Vacuum generation | Oil-free vacuum pumps

Rotary vane vacuum pumps – oil-free

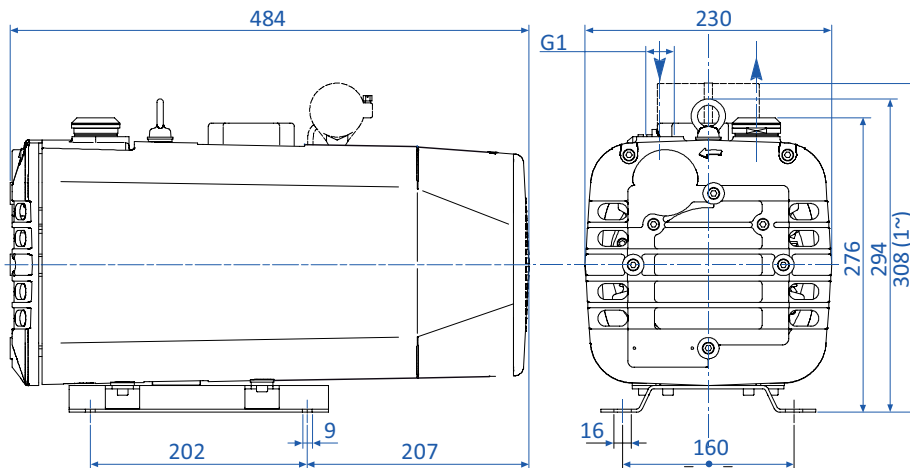
Dimensions



DT.16B-1 | DT.16B-3



DT.25B-1 | DT.25B-3



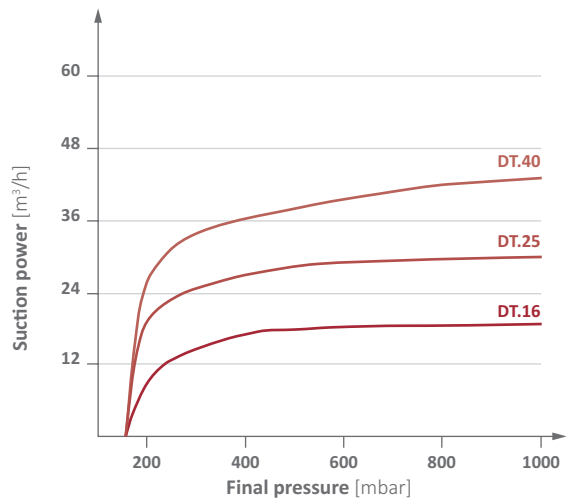
DT.40B-1 | DT.40B-3

* = 4 vanes, filter cartridge



Diagrams

> Suction power against vacuum level at 50 Hz



> Suction power against vacuum level at 60 Hz

